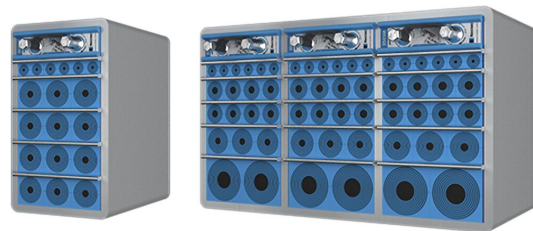




Passaggio Roxtec SBTB

Passaggio con telaio metallico per un livello elevato di protezione contro il fuoco.

Roxtec SBTB è un passaggio per cavi e tubi per livelli elevati di protezione al fuoco. Il telaio metallico del passaggio deve essere saldato alla struttura. Il sistema di sigillatura garantisce una semplice verifica della tenuta in pressione dopo l'installazione, attraverso la relativa soluzione back-to-back con un set di materiale aggiuntivo.



- Consente capacità di riserva integrata

Caratteristiche



Resistenza al fuoco



A tenuta stagna



A tenuta di gas

Struttura dell'installazione



Metallo

Tipo di montaggio



Saldatura

Ratings e certificati

Fuoco

- CLASSE A secondo IMO 2010 FTP Code
- CLASSE H secondo IMO 2010 FTP Code + curva del carico di incendio
- Jet fire in conformità alla ISO 22899-1 e OTI 95634

Tenuta

- Gas: 2,5 bar (catastrofico)
- Acqua: 4 bar (catastrofico)

Dimensioni telaio

mm/kg

Le varianti di telaio seguenti rappresentano una selezione limitata. Per la gamma completa di telai e configurazioni, visita [roxtec.com](https://www.roxtec.com).

Titolo	Aperture del telaio	Spazio di riempimento	Dimensioni esterne WxHxD	Dimensioni apertura w x h	Peso	Art. Nr.
SBTB 6x1 ALU	1	120 x 180	140.5 x 238 x 200	143(+1/-1) x 240(+1/-1)	4	105587
SBTB 6x2 ALU	2	120 x 180	271 x 238 x 200	273(+1/-1) x 240(+1/-1)	5.8	5SBT000007020
SBTB 6x3 ALU	3	120 x 180	401.5 x 238 x 200	404(+1/-1) x 240(+1/-1)	7.8	105588
SBTB 6x1 PRIMED	1	120 x 180	140.5 x 238 x 200	143(+1/-1) x 240(+1/-1)	10.5	5S00000004391
SBTB 6x2 PRIMED	2	120 x 180	271 x 238 x 200	273(+1/-1) x 240(+1/-1)	17	5S00000004503
SBTB 6x3 PRIMED	3	120 x 180	401.5 x 238 x 200	404(+1/-1) x 240(+1/-1)	22.3	5S00000004393
SBTB 6x1 AISI316	1	120 x 180	140.5 x 238 x 200	143(+1/-1) x 240(+1/-1)	10.8	5SBT000002149
SBTB 6x2 AISI316	2	120 x 180	271 x 238 x 200	273(+1/-1) x 240(+1/-1)	16.9	5SBT000004538
SBTB 6x3 AISI316	3	120 x 180	401.5 x 238 x 200	404(+1/-1) x 240(+1/-1)	22.8	5SBTB00010248



Dati relativi ai componenti

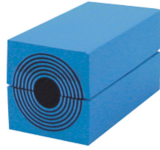
Componenti per la sigillatura



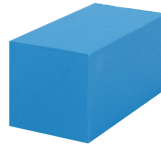
Lubrificante



Wedge kit e Wedge Roxtec



Modulo RM con
Multidiameter™



Blocco di riempimento RM



Piastra di ancoraggio
Roxtec



Accessori Holder



Strumenti Welding



kit di sigillatura

Per informazioni dettagliate, visita la pagina [roxtec.com](https://www.roxtec.com).

The product information provided by Roxtec does not release the purchaser of the Roxtec system, or part thereof, from the obligation to independently determine the suitability of the products for the intended process, installation and/or use.

Roxtec gives no guarantee for the Roxtec system or any part thereof and assumes no liability for any loss or damage whatsoever, whether direct, indirect, consequential, loss of profit or otherwise, occurred or caused by the Roxtec systems or installations containing components not manufactured by an authorized manufacturer and/or occurred or caused by the use of the Roxtec system in a manner or for an application other than for which the Roxtec system was designed or intended.

Roxtec expressly excludes any implied warranties of merchantability and fitness for a particular purpose and all other express or implied representations and warranties provided by statute or common law. User determines suitability of the Roxtec system for intended use and assumes all risk and liability in connection therewith. In no event shall Roxtec be liable for indirect, consequential, punitive, special, exemplary or incidental damages or losses.

The Roxtec products are offered and sold in accordance with the conditions of the Roxtec General Terms of Sales. The latest version of the Roxtec General Terms of Sales can be downloaded from <https://www.roxtec.com/en/about-us/about-roxtec/general-terms-of-sales/>

We reserve the right to make changes to the product and technical information without further notice. Any errors in print or entry are no claims for indemnity. The content of this publication is the property of Roxtec International AB and is protected by copyright.

This document was generated on: 2024-04-06